

COLOR CHART



UNLEASHING A SPECTRA OF COLORS FOR YOUR IDEAS!

Whether you are using our coated Aluminium Composite Panel sheets for Architectural, Signage or Specialty applications, Almaxco's extensive color palette offers you a wide selection of vibrant and rich colors to unleash your creativity and imagination.

- Almaxco Aluminium Composite Panel Sheets are coated with best quality paints procured from world-renowned paint suppliers such as PPG®, Beckers Industrial Coatings®, and Valspar®.
- Our in-house color stylists and technicians ensure that the quality of our coated coils is always maintained to the highest standards and conform to AAMA 2605 "Superior Performance Standard".
- Operating our own coating lines allows us to thoroughly quality - control every batch of production for the appropriate coating flexibility, adhesion, consistency in color gloss and thickness.
- We are able to offer our customers a wide selection of paint technologies in both solid and metallic colors for various interior and exterior applications that require different levels of durability and weatherability.

THE GREENER CHOICE

Our coating lines are installed with a Regenerative Thermal Oxidizer (RTO), which helps eliminate the emissions of Volatile Organic Compounds (VOC) into the environment during the coating process, thus reducing our carbon footprint. All paints used on Almaxco Panel Sheets conform to REACH and RoHs (Lead-Free) Standards.



Almaxco Polyvinylidene fluoride PVDF

- Exterior Grade paint
- UV resistant
- Highly Durable
- 2 or 3 coats
- Kynar 500/Hylar 5000 PVDF resins
- Lead-free (RoHs) & REACH Complaint

Gloss Range: 20% - 45%

Applications/Industries:

- Construction/Architectural
- Exterior Signage/Specialty

Almaxco Fluoroethylene Vinyl Ether FEVE

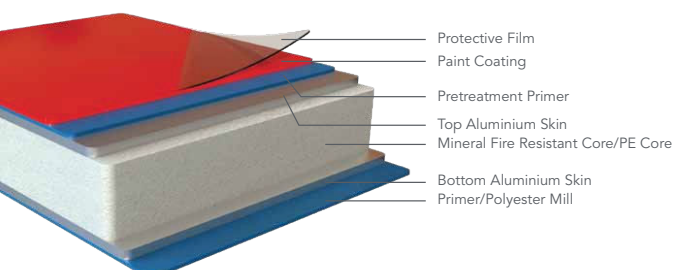
- Exterior grade paint
- UV resistant
- Highly durable
- 2 or 3 coats
- Japanese fluoropolymer coating technology
- Lead-free (RoHs) & REACH Complaint

Difference between FEVE and PVDF paint is the gloss levels, both paints are UV resistant and exterior grade paints, however if a project requires panels to have a higher gloss than FEVE paint should be selected. PVDF paint is restricted to maximum gloss of 45%.

Gloss Range: 20% - 80%

Applications/Industries:

- Construction/Architectural
- Exterior Signage/Specialty



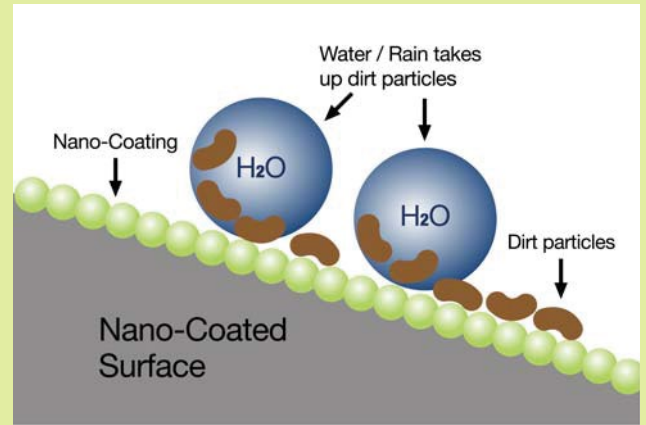
Almaxco NANO

- Enhanced performance
- Highly durable
- NANO coating is applied over 2 or 3 coats of PVDF
- Oil, water & dirt resistant
- Self-cleaning surface
- Non-toxic & VOC free
- UV resistant
- Exterior grade paint

Gloss Range: 30% - 50%

Applications/Industries:

- Construction/Architectural
- Specialty/ Transportation



Almaxco Polyester XT

- Interior grade paint
- Durable
- Non-UV Resistant
- Good ink absorption properties for UV Digital printing
- Good surface hardness & tension.
- Lead-free (RoHs) & REACH Compliant

Gloss Range: 20% - 95%

Applications/Industries:

- Digital Printing & Signage
- Specialty
- Transportation

Almaxco Specialty

- **3-Coat Timber and Natural Stone** PVDF or Polyester finish.
- **Chameleon** PVDF paint that offers a dual color effect when viewed from different angles under the sunlight.
- **High Durable Polyester** in paint in solid and metallic colors for kitchen splash backs and other specialty applications.
- **Hairline Brushed Finish** for signage, digital printing and specialty applications in wide selection of colors (Silver, Gold, Bronze)
- **Mirror Finish** for specialty and signage applications in Silver & Gold
- **Embossed Finish** for specialty applications in Polyester & PVDF coating

Applications/Industries:

- Architectural
- Specialty
- Kitchen
- Signage
- Interior
- Transportation

Almaxco Custom Colors

Having our own fully equipped in house color laboratory allows us to match any custom color quickly and accurately. Our strong partnership with our paint suppliers gives us an advantage to custom match all colors whilst adhering to AAM2605 standards.

- Ability to match any RAL, Pantone, or other custom colors for corporate & retail branding
- Ability to match most colors to 99% accuracy in varying gloss levels and paint types

Almaxco Digital

- Ultra-White Matt paint specially developed for direct UV digital printing
- Excellent ink absorption properties
- Non-UV
- Good surface hardness & tension
- Dyne test approx. 38-42

Gloss Range: 20-35%

Applications/Industries:

- UV Digital Printing Signs



NOTE:

Color matches are made on aluminium skin, not on the aluminium composite panel sheet and are meant for color approval only. Once the color is approved by the customer and the order is placed with us, we can then produce the actual order with approved custom color.

RAL COLOR REFERENCE							
1	RAL 9003	SIGN WHITE	AMD 6001	11	RAL 4006	TRAFFIC PURPLE	AMD 4006
2	RAL 9010	PURE WHITE	AMD 9010	12	RAL 4005	LILAC	AMD 4005
3	RAL 1013	OYSTER WHITE	AMD 1013	13	RAL 5017	TRAFFIC BLUE	AMD 1100
4	RAL 7035	LIGHT GREY	AMD 7035	14	RAL 5002	ULTRAMARINE BLUE	AMD 1180
5	RAL 7043	TRAFFIC GREY	AMD 7043	15	RAL 5021	WATER BLUE	AMD 5021
6	RAL 9005	JET BLACK	AMD 9005	16	RAL 6032	SIGNAL GREEN	AMD 6032
7	RAL 2004	PURE ORANGE	AMD 2004	17	RAL 6005	MOSS GREEN	AMD 6005
8	RAL 1023	TRAFFIC YELLOW	AMD 1023	18	RAL 3004	MERLOT	AMD 3004
9	CLOSE TO RAL 1028	JET YELLOW	AMD 1040	19	RAL 5013	COBALT BLUE	AMD 5013
10	RAL 3020	TRAFFIC RED	AMD 3020	20	RAL 7016	DARK GREY	AMD 7016

	PVDF	FEVE	NANO PVDF	POLYESTER XT	DIGITAL PE
INDUSTRY	Architectural / Specialty	Architectural / Outdoor Signage	Architectural	Signage / Speciality	Digital Printing Signage
DURABILITY	Excellent	Excellent	Excellent	Excellent	Excellent
WEATHERABILITY	Excellent	Excellent	Excellent	Good	Good
UV RESISTANCE	Excellent	Excellent	Excellent	Good	Good
GLOSS RANGE (%)	20-40	20-80	30-50	20-90	20-30
GLOSS RETENTION	Very Good	Very Good	Excellent	Good	Good
COLOR RETENTION	Very Good	Very Good	Excellent	Good	Good
GRAFFITI RESISTANT	No	No	Yes	No	No
UV DIGITAL PRINTING	Poor	Poor	Poor	Very Good	Excellent
INK ABSORPTION & ADHESION	Poor	Poor	Poor	Very Good	Excellent
VOC EMISSION FREE	Yes	Yes	Yes	Yes	Yes
ROHS (LEAD FREE PAINT)	Yes	Yes	Yes	Yes	Yes

Almaxco Aluminium Composite Panels are made from the best raw materials available in the industry. We uphold ourselves to produce the highest quality product in the most eco-friendly fashion. Almaxco ACP is LEED compliant and conforms to various EN, BS, ASTM & AS/NZS Standards.

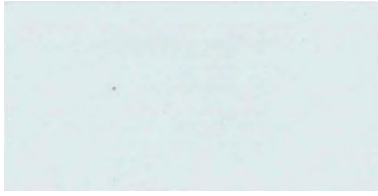
Distributor



Add to Favorite

SOLID

AMD 6001



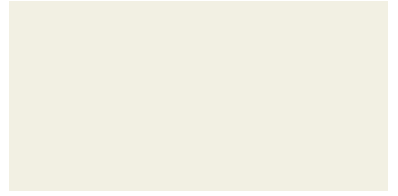
SIGN WHITE

AMD 9010



PURE WHITE

AMD 1013



OYSTER WHITE

AMD 7035



LIGHT GREY

AMD 7043



TRAFFIC GREY

AMD 9005



JET BLACK

AMD 2004



PURE ORANGE

AMD 1023



TRAFFIC YELLOW

AMD 1040



JET YELLOW

AMD 3020



TRAFFIC RED

AMD 2100



POST RED

AMD 4006



TRAFFIC PURPLE

AMD 4005



LILAC

AMD 1100



TRAFFIC BLUE

AMD 1180



ULTRAMARINE BLUE

AMD 5021



WATER BLUE

AMD 6032



SIGNAL GREEN

AMD 6005



MOSS GREEN

METALLIC

AMD 1050



SILVER GREY

AMD 1030



METALLIC SILVER

AMD 1130



SILVER CHAMPAGNE

AMD 1360



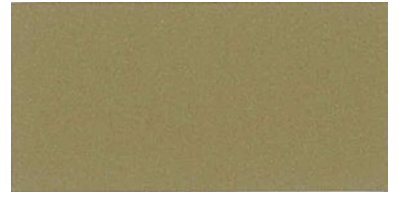
MOËT CHAMPAGNE

AMD 1500



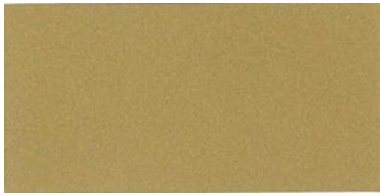
DARK CHAMPAGNE

AMD 1499



GOLD CHAMPAGNE

AMD 1501



CLASSIC GOLD

AMD 3446



ARABIAN GOLD

AMD 1150



PENNY COPPER

AMD 3530



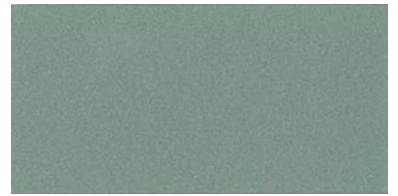
BRONZE

AMD 3535



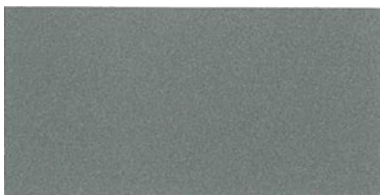
PINK METALLIC

AMD 1190



JADE METALLIC

AMD 1498



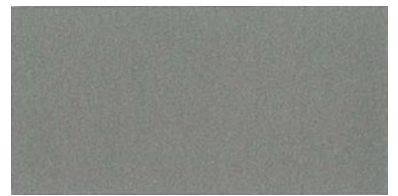
PEWTER

AMD 4822



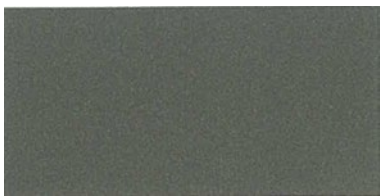
MIDNIGHT SILVER

AMD 5070



STEEL GREY

AMD 5180



GUN POWDER GREY

AMD 5186



MIDNIGHT GREY

AMD 5188



MIDNIGHT BLACK

SPARKLING

AMD 8001



SPARKLING SILVER

AMD 8002



SPARKLING GOLD

AMD 8003



SPARKLING RED

AMD 8004



SPARKLING BLUE

AMD 8005



SPARKLING PURPLE

AMD 8006



SPARKLING BLACK

SPECIALITY

AMD 001



SILVER BRUSHED

AMD 002



GOLDEN BRUSHED

AMD 003



BRONZE BRUSHED

AMD 004



SILVER MIRROR

AMD 005



GOLDEN MIRROR

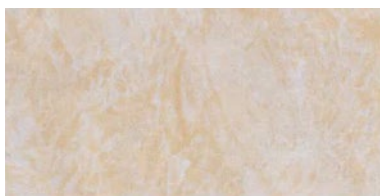
AMD 006



EMBOSSED

TIMBER/STONE

AMD 6058



TRAVERTINE

AMD 6059



SALT AND PEPPER

AMD 6056



INDIAN RED

AMD 6053



COGNAC CHERRY

AMD 6063



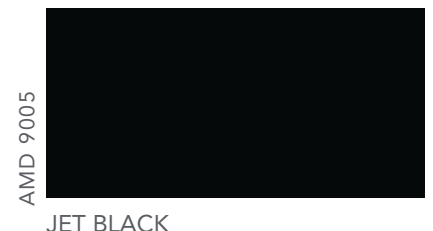
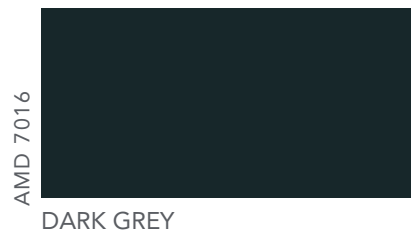
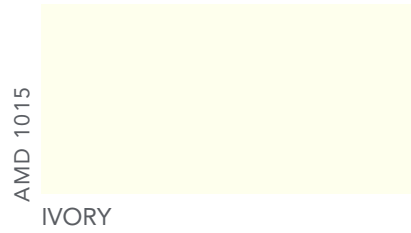
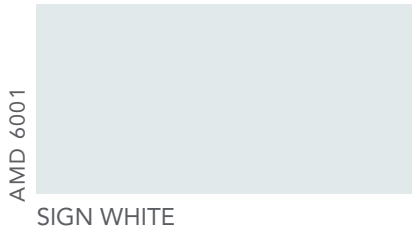
MOUNTAIN OAK

AMD 6073



JAVA TEAK

SOLID HIGH GLOSS



IMPORTANT NOTICE

- All Colors shown in this color chart are as close as possible to the actual colors but are subject by the limitation of commercial printing, hence slight color and shade variations are possible between the colors shown in this chart and the actual colors. Also, slight color variations are possible between different types of paints that might be selected. It is therefore highly recommended that actual color-matching sample in the selected paint type and required gloss levels be requested from Almaxco or its Sales Representatives prior to placing an order.
- To avoid possible reflection differences, it is imperative to install the panels in the same direction as shown by the arrows on the protection film.
- Color variations may occur between panels originating from different production batches. To ensure color consistency, it is imperative that all quantities required for a project, be placed in one order.